

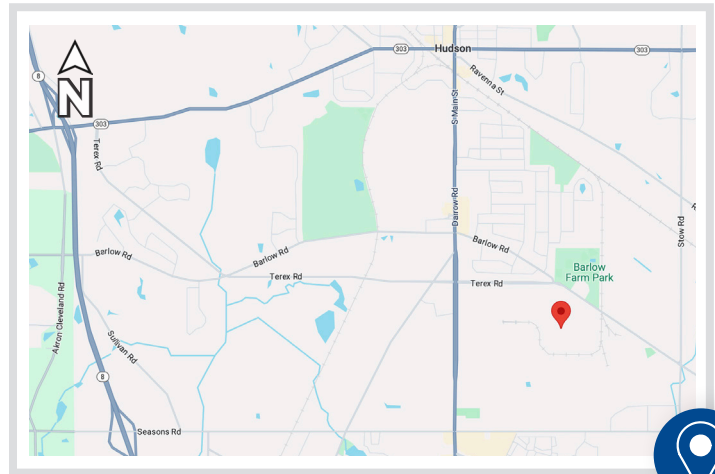


**5581 Hudson Industrial Pkwy.
Hudson, OH 44236**

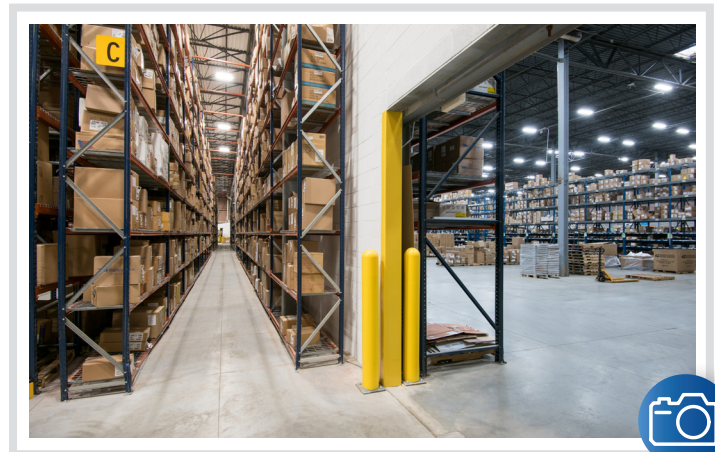
FOR LEASE

OVERVIEW

- Built in 2003 | Addition in 2021
- Building SF: 146,000
Office: 22,510 SF | WH: 123,490 SF
- 11.78 Acres
- Clear Height: 28'
- Column Spacing: 50' x 50'
Speed Bay: 50' x 60'
- Power: 1200 Amps, 480/277 3 phase
- WH Lighting: LED
- WH Sprinklers: ESFR
- WH Heat: Air Rotation, Gas Fired Reznor & Radiant Tube
- (11) Docks | (2) Drive-Ins
- Car Parking: 205
- Highway Access: 4 Miles to Route 8



 **PREMIER**
Development Partners



FOR MORE INFORMATION, PLEASE CONTACT:

Frank Black | 216.235.7052 Brian Lenahan | 216.469.6423 Kevin Callahan | 216.469.2143
frank@premierdevelop.com brian@premierdevelop.com kevin@premierdevelop.com

Information provided is obtained from sources deemed to be reliable, but is not guaranteed.



5581 Hudson Industrial Pkwy.
Hudson, OH 44236

FOR LEASE

