

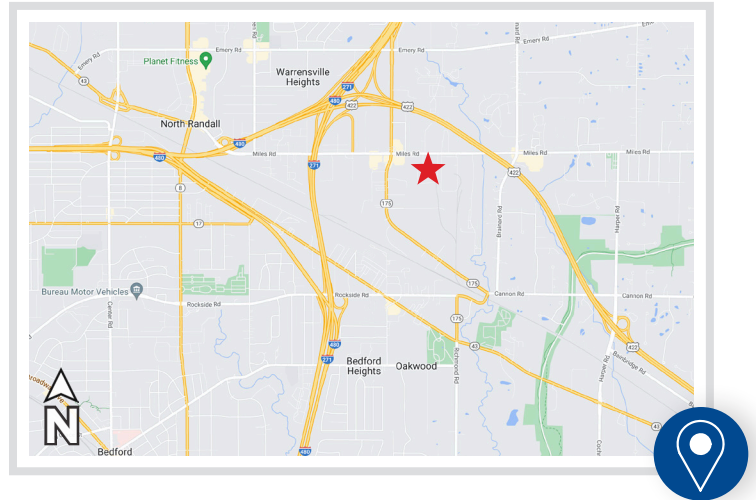


**26300 Miles Road  
Bedford Heights, OH 44146**

**AVAILABLE**

## OVERVIEW

- ± 166,429 Available SF
- Space A - 52,760 SF  
Office: 650 SF  
(2) Truck Docks  
Ceiling Height: 20'  
Column Spacing: 72' x 25' WH  
LED Lighting
- Space B - 113,669 SF, Divisible  
(1) Drive-in Door | (2) Truck Docks  
Cranes: 8 (1-5 Tons)  
Ceiling Height: 18'  
Column Spacing: 40' x 50'  
LED Lighting
- Heavy Power - 4 Services | 480 3-phase  
13,800 Amps
- Site Area: ± 29 Acres
- Abundant parking and outdoor storage
- Existing Rail Line- OmniTRAX, serviced  
by Norfolk Southern
- Immediate access to I-480, I-271, US 422



 **PREMIER**  
Development Partners



**FOR MORE INFORMATION, PLEASE CONTACT:**

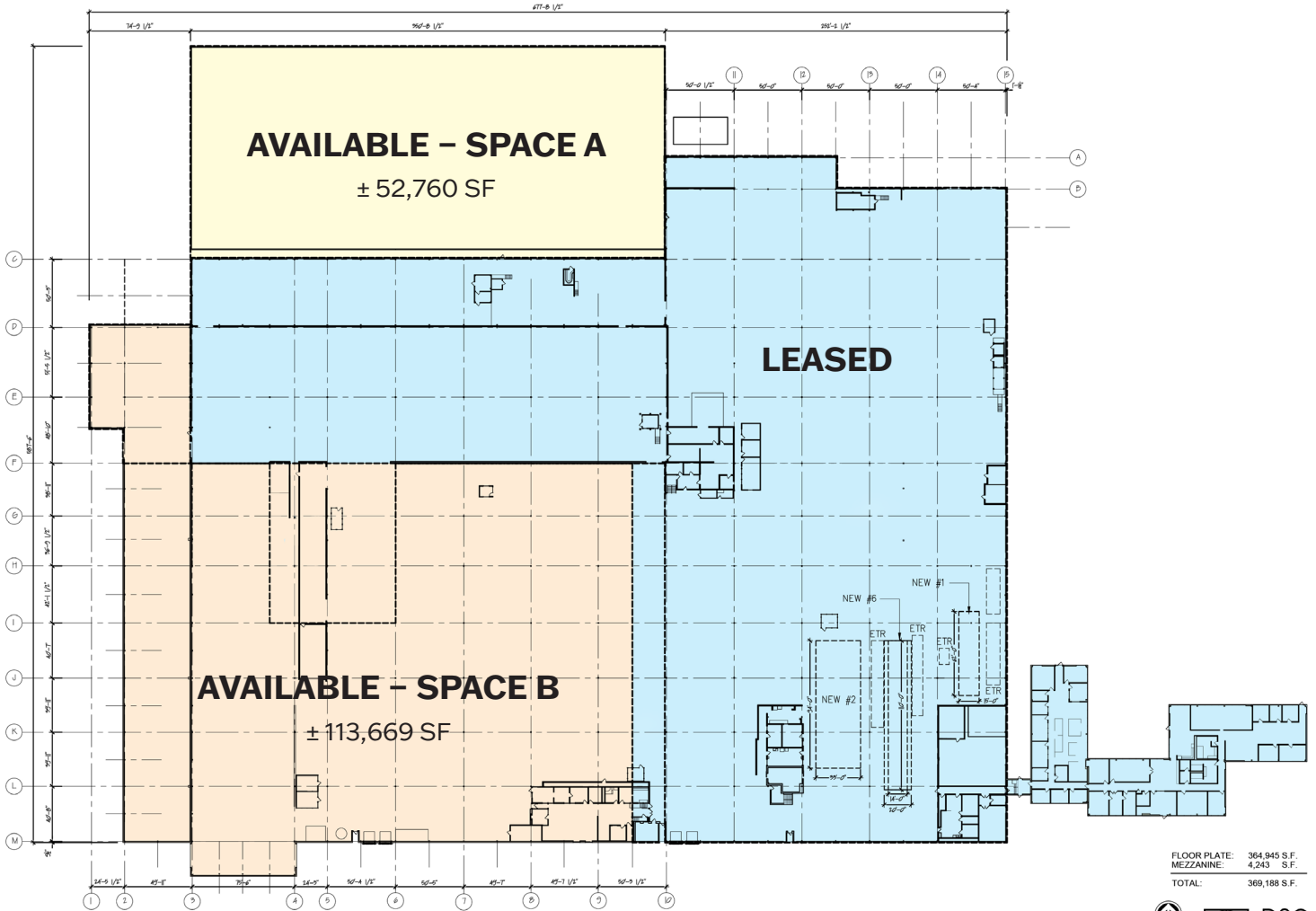
Frank Black | 216.235.7052  
frank@premierdevelop.com

Spencer Piszczak | 216.496.7000  
spencer@premierdevelop.com



**26300 Miles Road  
Bedford Heights, OH 44146**

**AVAILABLE**



FLOOR PLATE: 364,945 S.F.  
MEZZANINE: 4,243 S.F.  
TOTAL: 369,188 S.F.



AUGUST, 10 2023  
EXISTING CONDITION FLOOR PLAN

MILES ROAD  
26300 MILES ROAD  
BEDFORD, OHIO



EX-1



**26300 Miles Road  
Bedford Heights, OH 44146**

**AVAILABLE**

# Possible Building Expansions

