

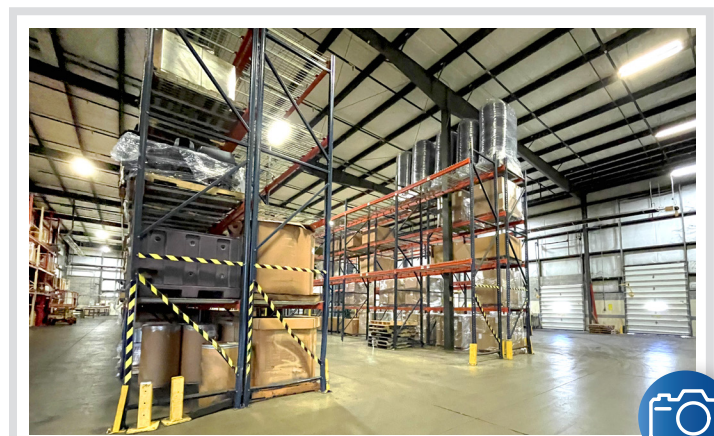
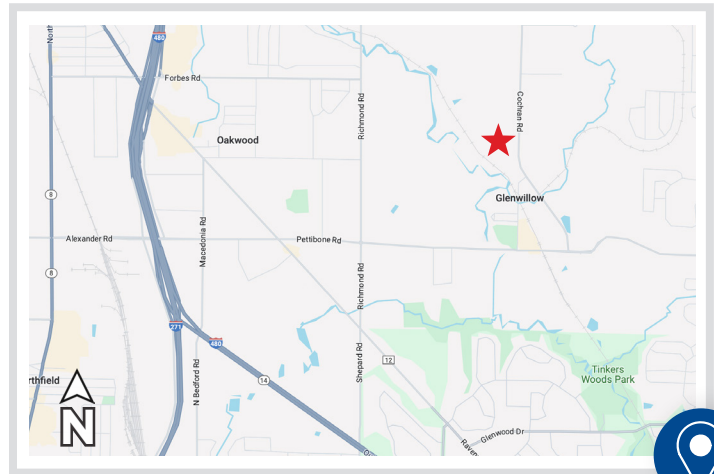


**27200 Tinkers Court
Glenwillow, OH 44139**

AVAILABLE

OVERVIEW

- Building SF: 39,036
Warehouse SF: 36,060
Office SF: 2,976
- Clear Height: 27'
- Column Spacing:
Mfg. - 29' x 24'
Dist. - 44' x 24'
- WH Lighting: LED
- WH Heat: Radiant Tube & Forced Air
- Manufacturing fully air conditioned
- Power: 3000 Amps, 488/277 3 phase
- Dock Doors: 4
- Drive-In Doors: 3 | (1) 12' x 12' (2) 12' x 14'
- Cranes: Two 5-Ton, 22' Under Hook
- Parking Stalls: 53+
- Outside storage and room for expansion
- 5 Acres



FOR MORE INFORMATION, PLEASE CONTACT:

Frank Black | 216.235.7052
frank@premierdevelop.com

Kevin Callahan | 216.469.2143
kevin@premierdevelop.com



27200 Tinkers Court Glenwillow, OH 44139

AVAILABLE

